



GROUP INFORMATION PACKAGE



7500 Hwy #3
Manning Park, BC V0X 1R0
www.manningpark.com

For more information please contact:
gsmanger@manningpark.com
Or call: 1-604-668-5935 / 1-800-330-3321



• MANNING •

PARK RESORT

BRITISH COLUMBIA, CANADA

WELCOME!

Hosting an event at Manning Park Resort means you can get away from it all and come together with your group in a natural and relaxing setting. We specialize in family reunions, school groups, corporate meetings and retreats in the heart of the Cascade Mountains and can accommodate groups of up to 400 individuals.

Whether you're planning an outdoor barbeque, a plated dining event or looking for accommodation in our lodge rooms, cabins or chalets, our Group Sales Coordinator is here to guide and assist you along the way to ensure your Manning Park Resort event is a resounding success.

Looking for a beautiful location for your group gathering just for the day? We offer Day Meeting Packages at an attractive rate to suit any event.

We offer:

- Meetings rooms for up to 200 individuals depending on room configuration
- A variety of accommodation options for up to 400 individuals
- Conference equipment and services
- Catered meals designed by our Executive Chef
- Friendly staff and efficient service
- Flexibility and customization options for your event
- A convenient retreat location central to the Lower Mainland, Fraser Valley, BC Interior and Washington State

Manning Park Resort is within E.C. Manning Provincial Park, which offers you incredible hiking, water-based activities and multi-purpose trails for biking and horseback riding, with snowshoeing, cross-country and backcountry trails in the winter. The Park contains a large number of scenic, historic, flora and fauna attractions and provides a wide range of both summer and winter recreational opportunities.

Let us help take the stress out of your planning process and create an event to remember at Manning Park Resort.

TABLE OF CONTENTS:

- Contents:** 3
- Indoor Areas:** 4
 - Alpine Room 4
 - Cascade Room 4
 - Tamarack Room 4
 - Windy Joe’s Hall 5
 - Marquee Tent 5
 - Bear’s Den Pub 5
- Resort Facilities:** 6
 - Loon Lagoon Facility & Fitness Center 6
 - Pinewoods Restaurant 6
 - Country Store 6
- Accommodation Options:** 7
 - Lodge Rooms..... 7
 - Cabins and Chalets 7
 - The Last Resort 9
 - Day Meeting Package 10
- Food & Beverage Services** 11
 - Breakfast Options 11
 - Lunch Options 12
 - Dinner Buffets, Beverages & Alcohol Options 13
- Other Considerations** 14
 - Equipment 14
 - WIFI & Connectivity 14
 - Pet Policy 14
 - Team Building Events 14
 - Fall/Winter Activities 15
 - Spring/Summer Activities: 16
- Group Rates** 17
 - Function Room Rates 17
 - Equipment Rates 17
 - Group Accommodation Rates 17

INDOOR AREAS

Meeting room capacities vary based on room configurations. Capacities listed are theatre-style seating.

Alpine Room

The Alpine Room is Manning Park Resort's newest addition located off the Pinewoods Dining Room. This large 3500 square foot function room is an ideal venue for corporate, family and social events.

Maximum capacity: 200 (Dining: 150)



Cascade Room

The Cascade Room is the perfect place to host a retreat or event with family, friends, and great food! This room is a versatile space, welcoming and intimate with plenty of natural lighting, yet large enough to accommodate 80 guests. It is located in the Pinewoods building, next to the Bistro.

Maximum capacity: 80 (Dining: 60)



Tamarack Room

The Tamarack Room is on the lower level of the main Lodge building. It is wheelchair accessible and comes with a large, pull-down projector screen. This is a multi-purpose room ideal for hosting meetings or lectures.

Maximum capacity: 110 (Dining: 80)



INDOOR AREAS

Windy Joe's Hall

Windy Joe's Hall is an ideal location to host a reunion, school or church group get-together or a BBQ. A stand-alone building, Windy Joe's Hall offers space for a private event with a 3-minute walk to the main Lodge. A fire pit and outdoor patio provide added opportunities for your event.

Maximum capacity: 80 (Dining: 60)



Marquee Tent

Adjacent to Windy Joe's Hall, this multi-tent set-up can encompass your whole party, allowing for a unique connection to nature while protecting your party in comfort and class.

Maximum capacity: 180 (Dining: 150)



Bear's Den Pub

Located on the lower floor of the Pinewoods building, the Bear's Den Pub is conveniently close to the Pinewoods Restaurant, Alpine and Cascade Rooms. A fun venue showcasing the feel of the wilderness, the Bear's Den Pub features a fireplace, dartboard, and pool table.

**Guests must be of legal drinking age. Both a rental fee and minimum alcohol expenditure apply so please contact our Group Sales Manager for rates.*



RESORT FACILITIES

Loon Lagoon Facility & Fitness Center

50 ft. salt water pool, 2 hot tubs, sauna, steam room, and coin operated laundry facilities. Our fitness center features cardio machines and free weights. Hours are from 8 am – 10 pm daily.



Pinewoods Restaurant

Enjoy a cozy environment and great food around our fireplace. The Pinewoods menu showcases our beautiful, unique location with fresh, local ingredients and British Columbian products - try a glass of Similkameen wine! Our Bistro offers hot coffees, fresh sandwiches, and an assortment of sweet treats. Ask about our daily specials.



Country Store

The Country Grocery & Liquor Store at Manning Park Resort, located in the Pinewoods building, is your stop for the necessities – and some fun extras as well! Stop by for snacks, basic groceries, alcohol and other beverages. This is also the place to pick up a souvenir or gift to remember your stay at Manning Park Resort.



ACCOMMODATION OPTIONS

Lodge Rooms

All lodge rooms are equipped with a mini fridge, microwave and coffee maker with complimentary tea and coffee. Wifi is available in the Lodge.

**Daily housekeeping is provided in the Lodge.*

Standard Rooms

31 rooms available

- Two queen beds
- 1 Accessibility room available
- 1 Junior king room available



Mini Suites

8 rooms available

- Two queen beds
- One pull-out sofa (bedding located in closet)
- Bar sink



ACCOMMODATION OPTIONS

Cabins and Chalets

All of our cabins & chalets include a full kitchen with living room and dining space, basic utensils, full bathroom, TV, and linens. Wifi is not available in the cabins and chalets.

**Daily housekeeping includes: towel change, garbage pick-up and bathroom cleaning.*

Standard Cabin

15 cabins available

- 2 bedrooms (max 6)
- 1 queen bed
- 2 bunk beds



Deluxe Cabin

5 cabins available

- 3 bedrooms (max 10)
- 2 king beds
- 2 bunk beds
- 1 pull-out sofa



Chalet

4 chalets available

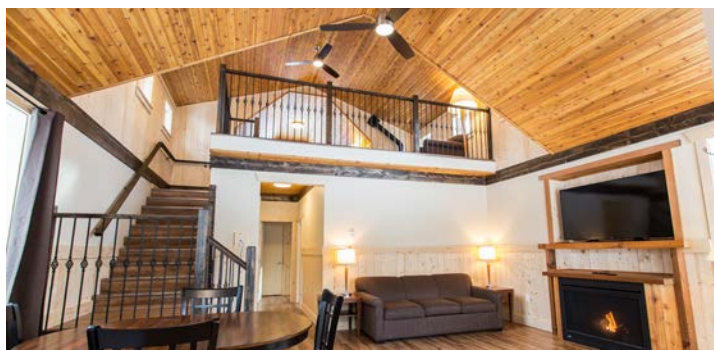
- Triplex (max 14)
- 2 queen beds
- 4 bunk beds
- 1 pull-out sofa



Premium Cabin

5 cabins available

- 2 bedrooms (max 11)
- 2 queen beds
- 1 bunk bed
- 2 single beds
- 2 pull-out sofa



ACCOMMODATION OPTIONS

The Last Resort

The Last Resort, one of the original buildings constructed in E.C. Manning Provincial Park, is a three-story structure with a rustic atmosphere.

The Last Resort includes 13 bedrooms, each with a unique configuration of beds hosting 2-8 individuals. There are communal washrooms on the first and second floors. The full kitchen is equipped with 2 stoves and 3 refrigerators, as well as dishes & utensils for 50 guests.

The Last Resort also includes:

- An outdoor fire pit
- Private parking
- All linens, towels, bedding
- Wifi

**Daily housekeeping services are not provided. However, towels are changed and garbage is picked up daily.*

Due to the size and complexity of this building, guests should be aware that additional charges may apply.



DAY MEETING PACKAGE

Looking for a beautiful location for your group gathering just for the day? Whether you are passing through with your group on Highway #3, or using Manning Park as a meeting point between attendees from the east and west, we offer Day Meeting Packages at an attractive rate to suit any event.

\$45.00 per Person

- (5% GST & 15% Gratuity not included).
- Based on a minimum of 10 people.
- Options to upgrade the lunch are available.

Day Meeting Lunch: The Pinewoods Buffet

- Soup of the Day
- Assorted Sandwiches
- Greek Pasta Salad
- Tossed Salad, Assorted Dressings
- Assorted Squares
- Coffee, Tea, Water Station
- (Full Day)

Included Event Room Features:

- Use of an event room, to suit your group
- Set-up of Tables & Chairs
- AV Equipment (Projector, Screen, etc.).
- Presentation items (Flip Chart, Dry Erase, etc.).
- Complimentary Corporate Wi-Fi for Presenters
- Complimentary Premium Wi-Fi for Group



FOOD & BEVERAGE SERVICES

Prices do not include 5% GST or 18% gratuity. They are subject to change.

Menu selections will be presented in a buffet format for groups of 24 people or more, unless otherwise noted. For groups with fewer than 24 people, the menu selections available are served as single plated meals.

BREAKFAST OPTIONS

Pre-order off Breakfast Menu

Please see current breakfast menu for options. **Available for groups of 24 or less.*

Manning Park Resort Buffet

- Fresh fruit salad
- Dry cereal
- Scrambled eggs
- Buttermilk pancakes
- Hash browns
- Toast station
- Coffee, tea

\$14 per person

Continental Buffet

- Fresh fruit salad
- Assorted muffins
- Dry cereal with milk
- Yogurt
- Toast station
- Coffee, tea

\$11 per person

The Manning Deluxe Buffet

- Fresh fruit salad
- Scrambled eggs
- Eggs Benedict
- Hash browns
- Bacon and sausage
- Waffles
- Toast station
- Assorted pastries
- Coffee, tea

\$20 per person

LUNCH OPTIONS

Business Meeting Lunch Buffet

- Soup of the day or
- Tossed green salad with house dressing
- Chef's choice of deli sandwich
- Vegetable platter
- Coffee, tea

\$16.00 per person

Available for groups of 24 or less

The Pinewoods Buffet

- Soup of the day
- Assorted sandwiches
- Greek pasta salad
- Tossed salad, assorted dressings
- Assorted squares
- Coffee, tea

\$18.00 per person

Available for groups of 24 or less

The Cascade Buffet

- Caesar salad
- Tossed green salad with assorted dressings
- Vegetable platter and dips
- Garlic bread
- Meat or vegetarian lasagne
- Penne Alfredo pasta
- Assorted squares
- Coffee, tea

\$22.00 per person



DINNER BUFFETS

Traditional Dinner

- Roasted turkey and traditional stuffing
- Glazed country ham
- Fresh rolls and butter
- Tossed green salad, assorted dressings
- Caesar salad
- Oven roasted potatoes
- Rice pilaf
- Sautéed seasonal vegetables
- Assorted dessert buffet
- Coffee, tea

\$36.00 per person

Country Dinner

- Bone-in ham leg
- Oven roasted chicken
- Fresh rolls and butter
- Tossed green salad, assorted dressings
- Potato salad
- Vegetable platter with dip
- Scalloped potatoes
- Sautéed seasonal vegetables
- Assorted dessert buffet
- Coffee, tea

\$34.00 per person

Summit Dinner

- AAA slow-roasted prime rib
- Wild BC salmon fillet
- Fresh rolls and butter
- Tossed green salad, assorted dressings
- Country potato salad
- Fresh vegetable platter with dip
- Herb roasted potatoes
- Sautéed seasonal vegetables
- Assorted dessert buffet
- Coffee, tea

\$50.00 per person

Classic BBQ Dinner

- BBQ chicken
- Baked meat lasagne
- BBQ baby back ribs
- Freshly baked dinner rolls
- Caesar salad
- Coleslaw
- Potato salad
- Roasted potatoes
- Sautéed seasonal vegetables
- Assorted dessert buffet
- Coffee, tea

\$45.00 per person

Beverages

Coffee Service, featuring
Marley Coffee

\$3.50/person

Milk and Juice served by the
pitcher

\$14.00/pitcher

Soft Drinks served by the
pitcher

\$8.00/pitcher

Alcohol Options

Our Standard and Premium Bar Service Menus and our Wine List are available upon request. Bartenders are available at a rate of \$20/hour when you are using our services for alcohol. A corkage fee of \$15 applies for each bottle of wine, sparkling wine, or champagne. This price does not include GST (5%) or gratuity (18%).

OTHER CONSIDERATIONS

Equipment

Equipment available for functions includes: portable sound system, speakers and amplifier, microphone and podium, projector and screen, folding chairs, folding tables, portable BBQ. Equipment is rented at a day rate with further details found at the end of this package.

WIFI & Connectivity

Please note there is limited cell service in Manning Park. Within each of our event rooms, we offer a dedicated corporate wifi network for business group presenters to enhance their meeting productivity. For our group attendees, our guest network provides a basic complimentary wifi connection with the option to purchase a premium connection for a nominal fee.

Team Building Events

While planning your retreat at Manning Park, allow us to help facilitate a host of memorable, interactive activities to build strong teams and enhance overall communication skills. Let us know your desired outcomes, and we will coordinate with a number of local facilitators to provide you with unique options to both achieve your objectives. and exceed expectations.

Pet Policy

Should you require a pet-friendly room, please request it at time of booking. We have a number of petfriendly accommodations available in the Lodge, cabins and chalets. An addition charge of \$25 per night will be applied for housekeeping purposes.



ACTIVITIES

Manning Park Resort offers numerous recreational activities for your enjoyment. Group rates are available. For rates and further details, please enquire about our Group Activities package.

Fall/Winter Activities

Alpine: Manning Park Resort has some of the best snow conditions in B.C. We are located at a charmed intersection between the temperate Coastal and dry desert Interior regions, which means our powder is top notch! The Ski Hill, open from December to April, is located 10 km east of Manning Park Resort and offers excellent ski and snowboard terrain for beginners to advanced. Equipment rentals and lessons are available.

Snow Tubing: Located at the Ski Hill, The Polar Coaster is Manning Park Resort's very own tube park, located at the Ski Hill. Enjoy a day of tubing on four beginner and advanced groomed runs. Lift service is provided so you can tube down and ride up.

Nordic: At Manning Park Resort, Nordic skiers can explore over 60 km of classic and skate ski groomed trails as well as 160 km of backcountry trails. This is cross-country skiing at its finest—in forests and valleys, with a scenic mountain backdrop. Equipment rentals and lessons are available. The Nordic Centre also offers guided cross-country skiing and snowshoeing tours.

Snowshoeing: Snowshoeing at Manning Park Resort is a fun and adventurous way to get into the park. With access to over 300km of trails for individuals of all abilities. Individuals new to snowshoeing can follow marked trails through the surrounding forest. Equipment rentals are available.

Guided Excursions: We offer both day and evening excursions with our friendly and knowledgeable guides. Prices are based on group numbers, and packages are available with or without rental equipment. tours.

Ice Skating: Ice skating at Manning Park Resort is available to all our guests when our outdoor rink is open. We also have everything you need to rent for a day of skating or a rousing game of hockey, including skates, hockey sticks, helmets and soft pucks. To protect guest safety, hard pucks are not permitted on the rink. See our friendly staff at the Nordic Centre for all equipment rentals. Please note that access to the outdoor rink is weather dependent.

Tobogganing: We have two free toboggan areas — a groomed run at the Alpine ski area and a smaller hillside area close to the Resort. Sleds and crazy carpets are available for sale in our Nordic Centre.



ACTIVITIES

Spring/Summer Activities

Canoeing: Enjoy and explore the waters of Lightning Lake with our boat rentals. Choose your adventure in a two-seater canoe, five-person Mackenzie canoe, rowboat, kayak or a stand-up paddleboard. We have hourly and day rates available at the Boathouse (located at the Lightning Lake Day Use Area), as well as group rates for boat rentals of 6 boats or more.

Hiking: With Manning Park Resort as your starting point, there is an outdoor adventure awaiting everyone. With options for both the beginner and experienced hiker alike, choose from a vast network of hiking trails exploring expansive valleys or stunning peaks. You can obtain a hiking map and more information from our Front Desk or the BC Parks Visitor Centre (located 1km east on Hwy #3).

Swimming: Take a refreshing dip in beautiful Lightning Lake! Swimming is best in late June to late August. Please note there are no lifeguards on duty.

Camping: There are four provincial campgrounds within E.C. Manning Provincial Park, as well as group campsites for groups from 15-50 at Lone Duck and Cambie Creek. Reservations can be made through Discover Camping and are available year-round.

Headwaters Horse Corral, next to Manning Park Lodge, caters to our equestrian friends, with 9 sites and a choice of hitching posts, corrals, or small open areas for your horses.

Wildlife Viewing: With over 206 species of birds and 63 species of mammals living in E.C. Manning Provincial Park, there are many opportunities for viewing. Wildlife and birds can be seen along alpine trails and meadows, as well as at Lightning Lake, the edge of the Similkameen River and the Park day use areas.

Mountain Biking: A map of mountain bike trails and information can be obtained from the Front Desk or the BC Parks Visitor Centre (1km East on Hwy #3). Volleyball, Basketball, Tennis Courts: located at Manning Park Resort. Equipment available from Front Desk.

Fishing: The Lightning Lake chain offers fishing opportunities for small rainbow trout. For the hardy hiker, Poland Lake and Nicomen Lake also offer good fishing. Fishing licenses must be obtained online.

Interpretive Programs: Join Manning Park Resort's Naturalists and guest speakers for entertaining and educational programs at the Lightning Lake Amphitheatre.



GROUP RATES

Function Rates

Room Name	Location	Size	Capacity (Theatre Style Seating)	Cost/Day
Alpine Room	Adjacent to Pinewoods Building	3500 sq ft	200	\$1000+tax
Cascade Room	Main Level Pinewoods	1150 sq ft 50ft x 23 ft	80	\$250+tax
Tamarack Room	Lower Level Main Lodge	1326 sq ft 52ft x 26ft	110	\$250+tax
Windy Joe's Hall	Northwest of Main Lodge	34ft x 32ft 12ft ceilings, 15ft at center	80	\$250+tax
Marquee Tent	Northwest of Main Lodge, Adjacent to Windy Joe's Hall	30x40 with 20x20 side extension	150	\$1000+tax
Bear's Den Pub	Please send your inquiry to gsmanager@manningpark.com should you be interested in the seasonal rates for the Bear's Den Pub			

Equipment Rates

Equipment	Price/Day/Unit
Portable sound system (iPod capable)	\$50
Speakers and amplifier	\$50
Microphone and podium	\$25
Projector (HDMI, RCA, VGA)	\$50
Propane BBQ	\$50 for small \$70 for medium \$100 for large

Accommodation Rates

For information on group accommodation and function room rates, please contact our Group Sales Agent for options and availability.